



Crewsaver®

WHY CHOOSE CREWSAVER LIFEJACKETS

Crewsaver

ERGOFIT 190

PROUDLY OBSESSIVE ABOUT YOUR SAFETY AND SURVIVAL

A large percentage of the boating world still do not wear lifejackets. As a manufacturer of integral safety equipment the challenge for Crewsaver has been to reduce this number through the design of comfortable and stylish lifejackets, whilst increasing the key safety features for vital in water performance.

Whatever your circumstances be sure to choose your lifejacket carefully. Whether you are selecting for yourself, your family, your crew or your colleagues, you should consider worst case scenarios and the type of lifejackets everyone should be wearing for their ultimate safety overboard. The Fusion 3D collection consisting of ErgoFit+, ErgoFit and Crewfit lifejackets mean that whatever your level or activity - there is a Crewsaver to suit.

Fusion 3D

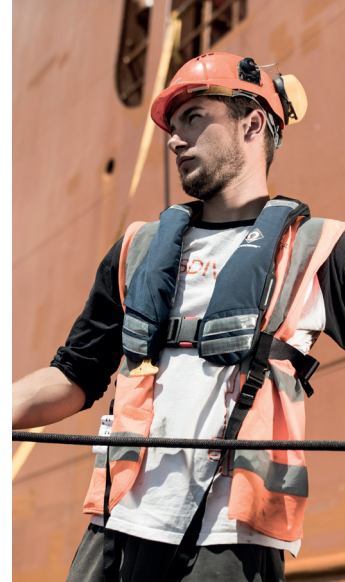
The Crewsaver lifejacket range encompasses the most innovative Fusion 3D technology, providing users at every price point with the most advanced comfort solutions available to date. The range moulds to the shape of your body and sits off your neck giving the user total freedom of movement – so comfortable you will forget you are wearing it.



FUSION 3D

Halo hood system

It has been proven that the addition of a spray hood inside a lifejacket can significantly enhance the wearer's safety. It increases visibility, retains heat and protects the airway by reducing the risk of secondary drowning. The ErgoFit+ features the halo hood system - an industry first designed for elevated airway protection. This is achieved through improved bladder and spray hood compatibility, and a new double halo construction. As a result, the spray hood is fully self-supporting once deployed and sits significantly higher above the face.



PROVIDING CRITICAL SAFETY SOLUTIONS

Survitec is recognised as the most comprehensive global total solutions provider for mission critical safety and survival equipment. With a history dating back over 160 years, Survitec commands market-leading positions worldwide in marine, offshore, defence & aviation survival technology.

As innovators with a passion for developing new products and services to meet the changing demands of our customers, we pride ourselves on delivering great service.

Although our business interests span many countries and markets, our people share a common mission... your safety.

As part of Survitec, the Crewsaver team are experts at discretely combining safety with practicality and style.



COMFORT. STYLE. PERFORMANCE.

THE ONLY COMPLETE 3D LIFEJACKET RANGE

Whether you seek comfort, performance, functionality, approval, reliability, longevity or strength, we have a Crewsaver lifejacket to suit. Our design team carefully chooses the best and most appropriate materials for each product, ensuring the ultimate in comfort and longevity for the individual environment.



ERGOFIT⁺ IT'S WHAT'S INSIDE THAT COUNTS

Using our **ErgoFit+** lifejacket as an example, we demonstrate the essentials of lifejacket design complete with a guide to our very latest safety features. This will help consolidate your knowledge and allow you to identify the features you need for your own specific use. Then simply pair up the features with our comprehensive lifejacket range to select the very best model for you.

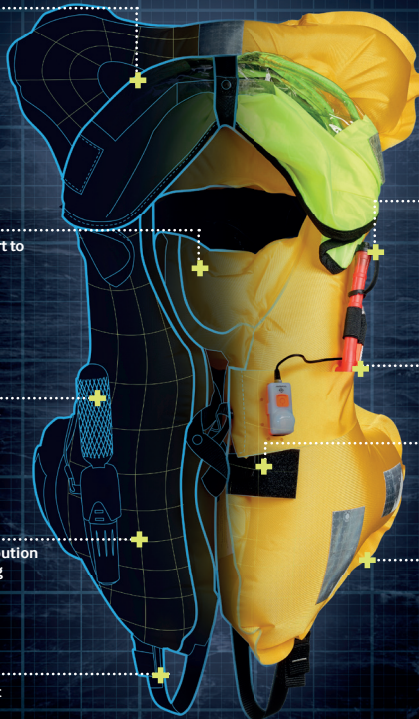
Sculpted profile for improved in-water mobility to aid self rescue

A built-in inflatable chin support to help protect your airway

The most up-to-date Hammar MA1 and UML Pro-Sensor inflation mechanisms which prevent accidental activation by wave splash

Market leading bladder distribution to provide exceptional turning solutions even when wearing heavy clothing*

Crotch straps to reduce jacket ride up



Manual oral inflation tube for additional air top up

Built-in lifejacket light and whistle

Built in PLB / AIS attachment points. AIS can be fitted to automatically activate on inflation

Reflective tape to aid visibility

INDUSTRY FIRST

Halo hood system for elevated airway protection

Day glow colour to aid visibility

Double halo construction

Large internal space to reduce claustrophobia



*For maximum protection in severe weather conditions / when wearing heavy waterproofs / when help is far away, we recommend opting for a 275N rated lifejacket, such as the ErgoFit+ 290N

SURVIVE, BE FOUND, AND GET RECOVERED.

Representing over 6 decades of experience gained at the wave face, each lifejacket in the range houses a uniquely crafted bladder to both deliver a faster turn speed and greater mouth freeboard (the distance between your airway and waterline).



1

Exceptional turning solutions

2

Average of 40% more freeboard

3


Easy access twin lifting beckets



ERGOFIT 290EX

Designed exclusively with Abu Dhabi Ocean Racing, based on the highly successful Crewsaver ErgoFit lifejacket collection, the ErgoFit Extreme maintains all of the high specification safety features as the ErgoFit 290N while providing essential performance attributes for the serious ocean racer.

Key Features:

- ✓ Sculped bladder profile for improved in-water mobility to aid self rescue
- ✓ Market leading bladder buoyancy distribution to maximise in-water support and airway protection
- ✓ Transparent indicator window to show the status of the inflation mechanism
- ✓ Dual buckle system to enable easy donning
- ✓ Easy to adjust side waist adjusters
- ✓ Robust 500D nylon heavy duty cover
- ✓ High quality hanging loop built into the lifejacket
- ✓ Fusion 3D shape providing the ultimate in comfort
- ✓ AIS and PLB compatible
- ✓ Lifejacket light and single hoop hood fitted as standard
- ✓  A unique number system for teams operating numerous amounts of jackets



3D SHAPE FOR UNRIVALLED FIT



EXCEPTIONAL TURNING SPEEDS



AIS COMPATIBLE



FREEDOM OF MOVEMENT



UNIQUE CHIN SUPPORT



PROVIDES 290N OF BUOYANCY



INDICATOR WINDOW



HEAVY DUTY COVER



BS EN ISO 12402-2



FUSION 3D



**EXPOSURE
OLAS
compatible**

NEW ERGOFIT⁺290

Enter the ErgoFit+ and its halo hood system. This industry first spray hood system works with the shape of the inflated bladder to significantly reduce the risk of water inhalation as well as heat loss.

The renowned ErgoFit bladder is, as always, a step above the rest. With its tailored shape, the bladder distributes buoyancy uniquely around the wearer to maximise in-water support and airway protection.

In addition, the ErgoFit+ incorporates a new-to-market buckle system. With its slimline design, the quick lock buckle makes the lifejacket easy to don and accommodates the use of a single loop harness attachment point for ease of tethering.

The hood also includes an internal panel which further protects the wearer against spray whilst doubling up as an anti-glare panel, shielding the wearers' eyes from the lifejacket light.

Key Features:

- ✓ **INDUSTRY FIRST** - Halo hood system for elevated airway protection
- ✓ **INDUSTRY FIRST** - Tailored window pocket, designed for full Exposure OLAS integration
- ✓ **INDUSTRY FIRST** - Slimline quick lock buckle system to provide easy donning
- ✓ Market leading bladder buoyancy distribution to maximise in-water support and airway protection
- ✓ Sculpted bladder profile for improved in-water mobility to aid self rescue
- ✓ Transparent indicator window to show the status of the inflation mechanism
- ✓ Fusion 3D shape providing the ultimate in comfort
- ✓ Soft loop D-ring for attaching safety harness
- ✓ Three-layer cover construction for durability
- ✓ Easy to adjust side waist adjusters
- ✓ AIS and PLB compatible
- ✓ Lifejacket light fitted as standard



FUSION 3D



**HALO HOOD
SYSTEM**



**QUICK
LOCK
BUCKLE**



**3D SHAPE FOR
UNRIVALLED
FIT**



**EXCEPTIONAL
TURNING
SPEEDS**



**AIS
COMPATIBLE**



**FREEDOM OF
MOVEMENT**



**UNIQUE CHIN
SUPPORT**



**PROVIDES
290N OF
BUOYANCY**



**INDICATOR
WINDOW**



**BS EN ISO
12402-2**





ERGOFIT 290^{OC}

The ErgoFit 290N OC is a 3D-moulded lifejacket designed for those working in the most ferocious and extreme marine environments or for serious ocean sailors facing the full fury of the elements.

With its intelligent cut-away profile, it allows you total mobility, leaving your body, limbs and hands unhindered and free to move, work and perform.

Key Features:

- ✓ Market leading bladder buoyancy distribution to maximise in-water support and airway protection
- ✓ Sculpted bladder profile for improved in-water mobility to aid self rescue
- ✓ Transparent indicator window to show the status of the inflation mechanism
- ✓ Fusion 3D shape providing the ultimate in comfort
- ✓ Soft loop D-ring for attaching safety harness
- ✓ Three-layer cover construction for durability
- ✓ Stainless steel buckle for added security
- ✓ Easy to adjust side waist adjusters
- ✓ AIS and PLB compatible
- ✓ Lifejacket light and single hoop hood fitted as standard



3D SHAPE FOR UNRIVALLED FIT



EXCEPTIONAL TURNING SPEEDS



AIS COMPATIBLE



FREEDOM OF MOVEMENT



UNIQUE CHIN SUPPORT



PROVIDES 290N OF BUOYANCY



INDICATOR WINDOW



BS EN ISO 12402-2



FUSION 3D



NEW ERGOFIT⁺190

Enter the ErgoFit+ and its halo hood system. This industry first spray hood system works with the shape of the inflated bladder to significantly reduce the risk of water inhalation as well as heat loss.

The renowned ErgoFit bladder is, as always, a step above the rest. With its tailored shape, the bladder distributes buoyancy uniquely around the wearer to maximise in-water support and airway protection.

In addition, the ErgoFit+ incorporates a new-to-market buckle system. With its slimline design, the quick lock buckle makes the lifejacket easy to don and accommodates the use of a single loop harness attachment point for ease of tethering.

The hood also includes an internal panel which further protects the wearer against spray whilst doubling up as an anti-glare panel, shielding the wearers' eyes from the lifejacket light.

Key Features:

- ✓ **INDUSTRY FIRST** - Halo hood system for elevated airway protection
- ✓ **INDUSTRY FIRST** - Tailored window pocket, designed for full Exposure OLAS integration
- ✓ **INDUSTRY FIRST** - Slimline quick lock buckle system to provide easy donning
- ✓ Market leading bladder buoyancy distribution to maximise in-water support and airway protection
- ✓ Sculpted bladder profile for improved in-water mobility to aid self rescue
- ✓ Transparent indicator window to show the status of the inflation mechanism
- ✓ Fusion 3D shape providing the ultimate in comfort
- ✓ Soft loop D-ring for attaching safety harness
- ✓ Three-layer cover construction for durability
- ✓ Easy to adjust side waist adjusters
- ✓ AIS and PLB compatible
- ✓ Lifejacket light fitted as standard



**HALO
HOOD
SYSTEM**



**QUICK
LOCK
BUCKLE**



**3D SHAPE FOR
UNRIVALLED
FIT**



**EXCEPTIONAL
TURNING
SPEEDS**



**AIS
COMPATIBLE**



**FREEDOM OF
MOVEMENT**



**UNIQUE CHIN
SUPPORT**



**PROVIDES
150N OF
BUOYANCY**



**INDICATOR
WINDOW**



**BS EN ISO
12402-2**





ERGOFIT 190^{OS}

The ErgoFit 190N OS itself is a 3D-moulded lifejacket designed to provide those braving the elements offshore, with the extra security needed in all conditions away from sight of land.

With its intelligent cut-away profile, it allows you total mobility, leaving your body, limbs and hands unhindered and free to move, work and perform.

Key Features:

- ✓ Market leading bladder buoyancy distribution to maximise in-water support and airway protection
- ✓ Sculpted bladder profile for improved in-water mobility to aid self rescue
- ✓ Transparent indicator window to show the status of the inflation mechanism
- ✓ Fusion 3D shape providing the ultimate in comfort
- ✓ Soft loop D-ring for attaching safety harness
- ✓ Three-layer cover construction for extreme durability
- ✓ Stainless steel buckle for added security
- ✓ Easy to adjust side waist adjusters
- ✓ AIS and PLB compatible
- ✓ Lifejacket light and single hoop hood fitted as standard



3D SHAPE FOR UNRIVALLED FIT



EXCEPTIONAL TURNING SPEEDS



AIS COMPATIBLE



FREEDOM OF MOVEMENT



UNIQUE CHIN SUPPORT



PROVIDES 150% OF BUOYANCY



INDICATOR WINDOW



BS EN ISO 12402-3



FUSION 3D



CREWFIT

The Crewfit range is the first of its kind in the world to offer; safe, stylish, comfortable and affordable solutions to the everyday recreational boater.

Using the knowledge and experienced we have gained during the development of the ErgoFit lifejacket range, alongside 30+ years of experience we have in the design and manufacture of inflatable lifejackets we are able to ensure that every Crewsaver lifejacket encompasses the most advanced and essential safety features at every price point.

NEW CREWFIT 180^{PRO} HD

The Crewfit 180N HD features 500D heavy duty front body panels to provide increased durability, as well as reflective tape on the cover to help achieve maximum visibility. This lifejacket is perfect for those working in the marine environment including marina and charter boat operatives, as well as leisure users such as fishermen looking for that next level in durability. The successful integration of a high volume shaped bladder design, a peninsula chin support and increased buoyancy to 180N provides you with excellent in water performance.

Key Features:

- ✓ Transparent indicator window to show the status of the inflation mechanism
- ✓ Twin, forward pull side waist adjusters
- ✓ Crotch strap
- ✓ Soft loop D-ring for attaching harness
- ✓ Fusion 3D shape providing the ultimate in comfort
- ✓ AIS compatible
- ✓ 500D heavy duty cover with external reflective tape option available



*Light and hood available as an optional extra for the Heavy Duty option

NEW CREWFIT 180^{PRO}

The first of its kind, an everyday boating lifejacket designed using 3D technology to radically increase comfort levels. Successful integration of a high volume shaped bladder design, a peninsula chin support and increased buoyancy to 180N provides you with excellent in water performance. The Crewfit 180N Pro wraps all of these safety features into a fun, stylish, 3D shaped and super comfy cover.

Key Features:

- ✓ Transparent indicator window to show the status of the inflation mechanism
- ✓ Robust outer cover
- ✓ Twin, forward pull side waist adjusters
- ✓ Crotch strap
- ✓ Soft loop D-ring for attaching harness (harness version)
- ✓ Fusion 3D shape providing the ultimate in comfort
- ✓ AIS compatible
- ✓ Lifejacket light fitted as standard



*Hood available as an optional extra for the CrewFit 180N Pro

Spray hood attachment

Oral tube

Peninsular chin support

Built-in lifejacket light and whistle

Attachment point for S20 AIS unit

180N inflation chamber

Reflective tape

Lifting becket



UNIQUE CHIN SUPPORT



AIS COMPATIBLE



PROVIDES 180N OF BUOYANCY



INDICATOR WINDOW



BS EN ISO 12402-3



FUSION 3D



CREWFIT 165^{SPORT}

Entry level to the 3D range the Crewfit 165N Sport is compact and has the essential features to ensure the recreational user remains safe when out on the water.

Key Features:

- ✓ Robust outer cover
- ✓ Centre buckle adjuster
- ✓ Crotch strap
- ✓ Soft loop D-ring for attaching harness (harness version)

- Oral tube
- Inflatable chin support
- Whistle
- Attachment point for Crewsaver Surface Light
- 165N inflation chamber
- Reflective tape
- UML MK5 Automatic or Halkey Roberts 840 Manual inflation mechanisms
- Lifting bucket



UNIQUE CHIN SUPPORT



PROVIDES 165N OF BUOYANCY



BS EN ISO 12402-3



FUSION 3D

*Light and hood available as an optional extra for the Crewfit 165N Sport

CREWFIT 150 JUNIOR

The first 3D designed lifejacket for juniors, helping to ensure your little ones remain as comfortable as possible when out on the water. Safety is paramount on the Crewfit 150N Junior, a unique bladder design with a peninsular chin support offers the most advanced performance solutions available today.

Key Features:

- ✓ Transparent indicator window to show the status of the inflation mechanism
- ✓ Robust outer cover
- ✓ Side waist adjuster
- ✓ Crotch strap
- ✓ Soft loop D-ring for attaching harness



UNIQUE CHIN
SUPPORT



PROVIDES 165N
OF BUOYANCY



INDICATOR
WINDOW



BS EN ISO
12402-3



FUSION 3D

*Light available as an optional extra
for the CrewFit 150N Junior



EXPOSURE OLAS

**THE OLAS TAG IS A COMPACT, 'SMART',
MAN OVERBOARD SYSTEM.**

The EXPOSURE OLAS Tag is now available as a fully integrable option into the Crewsaver ErgoFit+ lifejacket – taking man overboard protection to the next level.

Within 8 seconds of the man overboard incident occurring, the **OLAS** mobile application technology detects a break in its 'virtual tether' to the tag. The mobile phone(s) then sound a loud alarm, alerting crew to the fact someone is overboard. **OLAS** then aids the crew with the MOB recovery, clearly directing them to the GPS location where the MOB occurred with clear visual signals and bearing data. **OLAS** stores all location data and time of incident required by the rescue services.

FUSION 3D LIFEJACKETS - SPECIFICATION COMPARISON

LIFEJACKET

INDUSTRY FIRST - EXPOSURE OLAS COMPATIBLE

INDUSTRY FIRST - QUICK LOCK BUCKLE SYSTEM

INDUSTRY FIRST - HALO HOOD SYSTEM FOR ELEVATED AIRWAY PROTECTION

BUILT-IN SINGLE HOOPED HOOD

BREATHABLE AIR MESH LINING

HEAVY DUTY 500D OUTER COVER

INDICATOR WINDOW

REINFORCED WEBBING CHANNELS

HANGING LOOP

PLB POCKET

NEO KNIFE POCKET

UNIQUE NUMBER SYSTEM

HARNESS ATTACHMENT POINT (ON HARNESS VERSIONS)

BACK BUCKLE RELEASE TABS

WEBBING TIDIES

TWIN LIFTING BECKETS

SINGLE LIFTING BECKET

AIS S20 COMPATIBLE

BLADDER

MOULDED MANUAL PULL HANDLE

FITTED CSL LIGHT

CHIN SUPPORT

SCULPTED BLADDER FOR SELF RESCUE

EXCEPTIONAL TURNING SPEEDS

	ERGO-FIT 290 ^{EX}	ERGO-FIT 290	ERGO-FIT 290 ^{OC}	ERGO-FIT 190	ERGO-FIT 190 ^{OS}	CREW-FIT 180 ^{PRO HD}	CREW-FIT 180 ^{PRO}	CREW-FIT 145 ^{SPORT}	CREW-FIT 150 ^{JUNIOR}
INDUSTRY FIRST - EXPOSURE OLAS COMPATIBLE		✓		✓					
INDUSTRY FIRST - QUICK LOCK BUCKLE SYSTEM		✓		✓					
INDUSTRY FIRST - HALO HOOD SYSTEM FOR ELEVATED AIRWAY PROTECTION		✓		✓					
BUILT-IN SINGLE HOOPED HOOD	✓		✓		✓				
BREATHABLE AIR MESH LINING	✓	✓	✓	✓	✓				
HEAVY DUTY 500D OUTER COVER	✓					✓			
INDICATOR WINDOW	✓	✓	✓	✓	✓	✓	✓		✓
REINFORCED WEBBING CHANNELS	✓								
HANGING LOOP	✓	✓	✓	✓	✓				
PLB POCKET	✓	✓	✓	✓	✓				
NEO KNIFE POCKET	✓	✓	✓	✓	✓				
UNIQUE NUMBER SYSTEM	✓	✓	✓	✓					
HARNESS ATTACHMENT POINT (ON HARNESS VERSIONS)	✓	✓	✓	✓	✓	✓	✓	✓	✓
BACK BUCKLE RELEASE TABS	✓	✓	✓	✓	✓	✓	✓		✓
WEBBING TIDIES	✓	✓	✓	✓	✓	✓	✓	✓	✓
TWIN LIFTING BECKETS	✓	✓	✓	✓	✓				
SINGLE LIFTING BECKET						✓	✓	✓	✓
AIS S20 COMPATIBLE	✓	✓	✓	✓	✓	✓	✓		
BLADDER									
MOULDED MANUAL PULL HANDLE	✓	✓	✓	✓	✓				
FITTED CSL LIGHT	✓	✓	✓	✓	✓		✓		
CHIN SUPPORT	✓	✓	✓	✓	✓	✓	✓	✓	✓
SCULPTED BLADDER FOR SELF RESCUE	✓	✓	✓	✓	✓				
EXCEPTIONAL TURNING SPEEDS	✓	✓	✓	✓	✓	✓	✓	✓	✓



DID YOU KNOW...

In addition to elite ocean racers, Crewsaver works with leading organisations from a variety of sectors including; the emergency services plus defence and aviation operatives. These developments are often shared across Crewsaver's lifejacket offering, so the everyday leisure user can benefit from the same safety technology.

As a result, Crewsaver's lifejacket collection features an exceptionally high level of construction combined with the looks and practicality to suit the toughest marine environments and the most demanding user.

"We are constantly driving forward the safety technology used in our products. When we develop a new feature, we are quick to look at where else this feature can be utilised to advance our other product ranges."

– Nigel Parkes, Crewsaver's Head of Design

DO YOU KNOW HOW TO REARM YOUR LIFEJACKET?



HOW-TO VIDEOS

- ✓ Rearming your lifejacket
- ✓ Repacking your lifejacket
- ✓ Care & maintenance of your lifejacket

Watch them at [crewsaver.com/how-to](https://www.crewsaver.com/how-to)



RESCUE & SAFETY



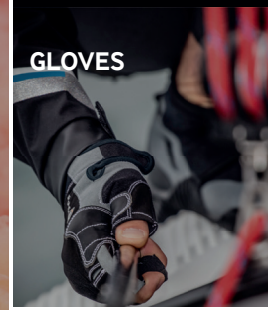
LUGGAGE



DISTRESS SIGNALS



GLOVES



Crewsaver®

PERFORMANCE CLOTHING



BUOYANCY AIDS



LIFERAFTS



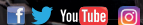
WE HAVE YOUR
SAFETY
COVERED

To view Crewsaver's complete range visit: www.crewsaver.com

LIFEJACKETS



FOOTWEAR



MARKER BUOYS



survitec